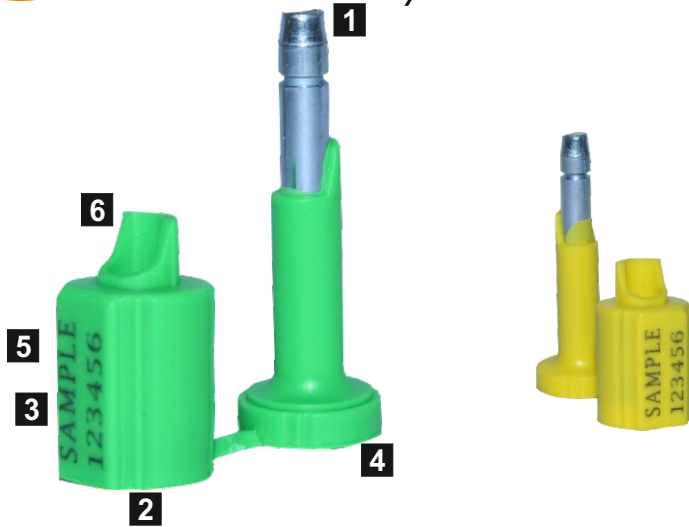




Container Bottle Lock

(Beta-8)

NAIMISHA Corporation



High Security Container Bolt Seal

The Container Bolt Lock's locking mechanism, the clip, is embedded in a groove in the metal bush, making the seals stronger and making them more difficult to tamper with.

Typical applications of the Container Bolt Lock include shipping and intermodal containers. The Container Bolt Lock is also widely used for ground transportation.

- 1** The metallic pin and bush of the Container Bolt Lock is made of high-carbon steel which gives better strength and added security.
- 2** The barrel is made from high-impact PP/ABS, which is moulded on to the high-carbon steel bush.
- 3** The Container Bolt Lock are etched with permanent laser marking. Marking offers the highest level of security as it cannot be removed and replaced/Tampered.
- 4** Standard embossed of customer logo marked with direct moulding on pin head.
- 5** Standard markings include serial number and customer name.
- 6** Anti spin mechanism to avoid friction

Technical Specifications

PRODUCT

Material	Pin Length	Bolt Diameter	Bolt Lock Length	Tensile Strength	Marking Area	Marking Digits
Pin and barrel High-carbon steel	68 mm	Ø 7.8 mm	80 mm	1000Kg	10 X 25 mm	4 - 9

Barrel: High-impact P.P/ABS

Packaging Standard

Carton Quantity	Dimensions	Weight kg/carton	Volume m3/carton	Standard Colours
250 (50X5) pcs	400 x 270 x 160	10.5kg	0.02 M ³	